

BEHIND THE

The official newsletter of SHIELDS for Families



SHIELDS

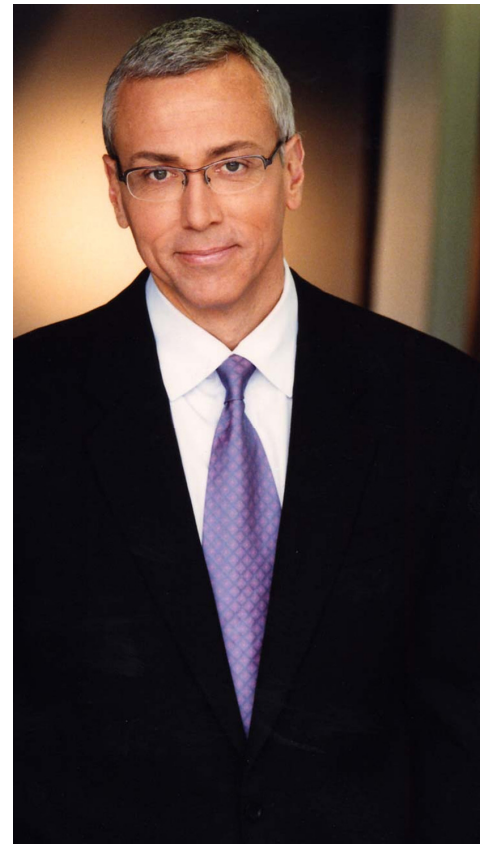
www.shieldsforfamilies.org | Winter/Spring 2011

VH1's Celebrity Rehab with Dr. Drew visits SHIELDS for Families

Two episodes of VH1's Celebrity Rehab with Dr. Drew, one in Season 3 and another in Season 4, were filmed with SHIELDS for Families Director Kathryn Icenhower, PhD, LCSW, and many SHIELDS clients, children, and alumni. Dr. Drew and his group of celebrity patients including, Season 3's Dennis Rodman, Mackenzie Phillips, Mindy McCready, Mike Starr, Lisa D'Amato, Kari Ann Peniche, and Joey Kovar, and Season 4's Frankie Lons, Janice Dickinson, Leif Garrett, Jeremy London, Jason Davis, Rachel Uchitel, and Jason Wahler, visited SHIELDS to learn about the impact substance abuse has on children and families.

The patients heard stories of desperation, loss, and suffering due to substance abuse, as well as stories of hope and recovery as the children, clients, and alumni of SHIELDS shared about getting sober for good, being reunified with family, and regaining a strong and successful future for themselves and their families. We are proud of our clients and Heros/Sheros youth who were brave enough to share their testimonies on national TV, and of three SHIELDS Alumni featured on the show, Phyllis Story, Alison Qualls and Anita Hall, who have all led sober, healthy, successful lives since graduating from SHIELDS and are all staff members today at SHIELDS for Families.

To see clips of the show visit <http://shieldsforfamilies.blogspot.com/>



SHIELDS Receives Generous Holiday Donations

Every year SHIELDS seeks the support of individual, group, and corporate donors to assist us in providing a joyful holiday for our children and families. We continually struggle to find stable, on-going donors to sponsor our programs during the holidays each year. Our need is always great because SHIELDS serves over 5,000 families annually, yet the current state of the economy has affected the amount of donations we receive. Thankfully, a few

stepped up to show their support and generosity this year and SHIELDS is thankful for their commitment and support. We received donations from a few individuals including many of our own SHIELDS staff and Client Council Activities Committee members, some local community groups such as the Blossoms Social and Charity Club and Brothers of the Son Motorcycle Club, a few institutions such as the USC Gould School of Law, some local busi-

nesses such as Schools Federal Credit Union, and many government entities such as the Sheriff's Department, the offices of Senator Curren Price and Assemblymember Isadore Hall, and the Fox Entertainment Government Affairs Division. Because of their giving, SHIELDS' children and families celebrated a wonderful holiday together as a family, strengthened by generosity and hope.

White House “Drug Czar” Visits the SHIELDS Exodus Program

“ONDCP and the Administration are working to expand comprehensive, family-based treatment options. Although few addiction treatment programs are equipped to accommodate addicted women who have dependent children, family-based treatment programs have proven effective in coordinating comprehensive services for both mothers and their children together as a family. Family treatment not only addresses substance abuse, but also domestic violence, sexual abuse, and other traumas. Services are provided both to mothers and to their children. Investment in family based treatment pays off in reduced costs of crime, foster care, Temporary Assistance to Needy Families (TANF) benefits, and adverse birth outcomes. Family treatment offers highly troubled families hope and opportunity for stability, child well-being, and the disruption of intergenerational addiction, violence, and poverty.”



The Director of the White House Office of National Drug Control Policy (ONDCP), Gil Kerlikowske, also known as the “Drug Czar”, visited the SHIELDS for Families Exodus Program to learn more about our unique family-centered treatment model. The Drug Czar toured our Keith Village Housing Complex, where clients and their families live and engage in treatment and wraparound services on-site in our Exodus Program. After the tour, he met with various staff, clients, alumni, and community partners to learn about SHIELDS’ partnerships, program model, and successes. Mothers and their children spoke of their experience of being in SHIELDS, stories of hard work and victory, where they regained custody of their children and remained sober for the first time in their lives. He also heard the testimonies of families strengthened by the skills and support provided by SHIELDS through individual, group and family therapy, life skills such as health and nutrition, and educational and vocational training including basic skills, computer training, and job readiness, training, and placement. The Drug Czar engaged in discussion with the clients and their families to gain a better understanding of the program and their experience with a family-centered treatment model. SHIELDS is grateful for the opportunity to share our work with the Drug Czar and we look forward to family-centered treatment becoming a national model.

SHIELDS Launches A New Website



In early 2011, SHIELDS launched their updated look with a new website that features some new aspects including a sleeker graphic design, easier navigation, detailed descriptions of all SHIELDS programs, and an “Intranet” section where employees will be able to access internal event calendars, download interoffice forms and assessments and make suggestions that could improve the quality of services that SHIELDS delivers to the community.

The website was developed by Quantum Method and OmniPlatform with the meticulous assistance of SHIELDS Development Department which includes Stephanie Moss, Development Coordinator and Malcolm Cooper, the newly appointed Development Specialist.

Both Stephanie and Malcolm are committed to making sure that the new SHIELDS website will provide employees, clients, and the community at large with the most up-to-date information on SHIELDS services, news, events, trainings, employment opportunities, and more!

In addition to the website, SHIELDS is building its social media presence on networks including facebook, twitter, and LinkedIn. Join our pages to keep up to date on all things SHIELDS!

2011 Marks SHIELDS for Families' 20th Anniversary

After incorporating in 1991, SHIELDS rapidly grew from 1 program and 3 staff located on-site at Martin Luther King/Drew Hospital to 34 programs and 350 staff throughout 15 locations. Today, SHIELDS invests in the lives of 5,000 families annually through its programs in Child Welfare, Substance Abuse, Mental Health, Children and Youth, and Supportive Services such as housing, transportation, and educational/vocational training. SHIELDS may be best known for its innovative approaches to service delivery, utilizing a “one-stop shop” approach to its family-centered services. SHIELDS is also known for establishing and maintaining strong collaborations with various government and social service entities in order to improve services and outcomes for families.

Some of SHIELDS' most notable accomplishments include the

development and piloting of Up Front Assessments (UFAs) as a component of the Point-of-Engagement program with the Department of Children and Family Services. UFAs engage the whole family unit and other supportive members to prevent or reduce involvement with “the system” and ensure their long-term success. These efforts led to cutting the number of children and the length of time placed in out-of-home care by 50% in Compton, which was once the leader in disproportionately placing African-American children in out-of-home care. Another unique accomplishment is SHIELDS' family-centered treatment model, providing housing, treatment, mental health, children and youth programs, and other supportive services on-site to the entire family, no matter how large. The SHIELDS family-centered treatment model has led to

average completion rates of over 81% (over 3 times the national average). The model has been featured in many research and scholarly journal articles, national television segments including Vh1's “Celebrity Rehab with Dr. Drew”, and internationally recognized by the UN and replicated in areas such as Alaska and New Zealand. SHIELDS is most proud of the hard work, commitment, and success and of its current clients and many active alumni, who have rebuilt their lives and become productive members of their families and communities, and many of whom now work as SHIELDS employees.

In 2011, SHIELDS for Families commemorates 20 years of building strong foundations, families, and futures. Thank you to everyone who has supported us along the way!

SHIELDS Offers Its First Set Of Innovative Trainings

Through a generous grant from the James Irvine foundation, SHIELDS developed training manuals and accompanying DVDs for both their Family-Centered Treatment and Up-Front Assessment (UFA) / Point-of-Engagement (POE) Program Models. SHIELDS' Executive Director Kathryn Icenhower coordinated efforts with Community One Consulting, Will Walker PhD, and Angela Jernigan to develop the manuals, and Jake Alba of Rhythm Los Angeles to produce the DVDs. With the manuals and DVDs complete, SHIELDS facilitated two separate trainings, each one was free and worth 12 continuing education units.

Family – Centered Treatment Model:

This two day training engaged 50 people from 15 different agencies in all the aspects necessary for understanding, implementing, and delivering a family-centered treatment model. Participants were challenged to think “outside the box” of traditional service delivery models where only the individual is treated and to consider adopting a family-centered treatment model that produces successful outcomes 3x greater than the national average.

Up-Front Assessment (UFA) / Point-of-Engagement (POE) Model:

This two day training engaged about 15 participants from 5 different agencies on the history of Point-of-Engagement and trained them on the UFA process. It was particularly helpful for agencies that were interested in building a better partnership with their local Department of Children and Family Services to implement an Up Front Assessment Process that would provide services to families that would allow them to better care for children at home, and thereby reduce the numbers of children detained by the Department.



SHIELDS Welcomes Visitors From Across The Globe

In addition to the exciting visit from the Drug Czar, SHIELDS also welcomed a visit from the United Nations Special Rapporteur Najat MAALLA M'JID. Through a recommendation from the Rebecca Project, the Special Rapporteur toured SHIELDS for Families and met with our clients, families, and collaborative partners. She learned how the family-centered treatment model is an effective prevention and intervention strategy for reducing the cycles of domestic violence, substance use, and sexual abuse. She was especially moved by the genuine testimonies from clients about their life struggles and stories of hope and recovery since being a part of SHIELDS for Families.



SHIELDS New Human Resources Administrator

SHIELDS is proud to introduce our New HR Administrator Deanette Brewer. A seasoned strategic human resources professional and a proactive business partner to executive management SHIELDS welcomes Deanette as part of our administrative family. Acquiring extensive Human Resources Management experience within Charles R. Drew University, she was a key participant in the facilitation and implementation of new technology, efficiency processes and infrastructure improvements to achieve organizational goals. She recently obtained her professional human resources certification, PHR. Deanette's personal mantra is, "Service is the rent we pay for being alive" which is a quote from Marian Wright Edelman, founder of the Children's Defense Fund. She also enjoys indoor cycling, reading, traveling and volunteering for organizations that provide support services to women and teen mothers.



PO Box 59129 / Los Angeles / CA 90059
TEL 323.242.5000 / FAX 323.242.5011
www.shieldsforfamilies.org