

MISSION STATEMENT

SHIELDS for families is a non-profit community-based organization dedicated to developing, delivering, and evaluating culturally sensitive, comprehensive service models that empower and advocate for high-risk families for over 20 years.

HISTORY

SHIELDS was formed in 1987 in response to high incidence of infants born prenatally exposed to drugs at Martin Luther King Hospital in South Central Los Angeles.

SHIELDS began providing services to this unique population and has since grown to provide over 30 comprehensive, family-centered, wrap-around programs addressing issues facing high-risk families in South LA.



SHIELDS for Families has been winning the battle against poverty and substance abuse since 1991.

A leader in the child welfare and substance abuse fields, our programs change and save lives

For more information about SHIELDS for Families visit our website at www.shieldsforfamilies.org and join our networks online



11601 S. Western
Los Angeles / CA 90047
ph 323.242.5000
fx 323.242.5011
admindept@shieldsforfamilies.org

Facebook
www.facebook.com/shields4family

Twitter
www.twitter.com/SHIELDS4Family

Blog
www.shieldsforfamilies.blogspot.com

LinkedIn
www.linkedin.com/company/shields-for-families



Agency Overview

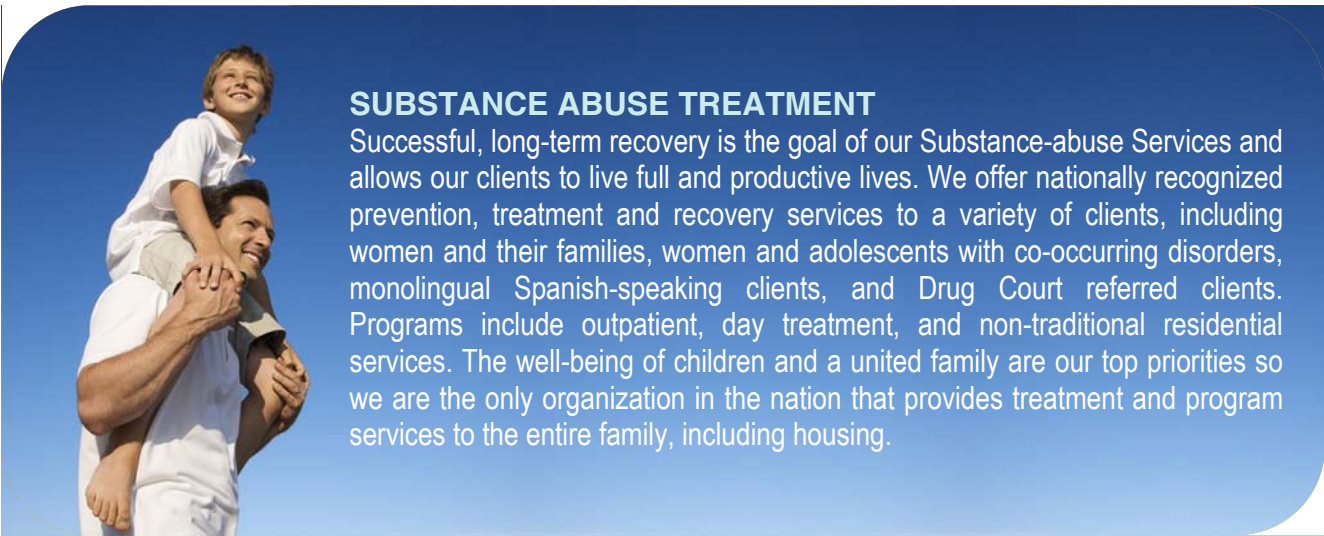
SHIELDS
for families



believing, building, becoming

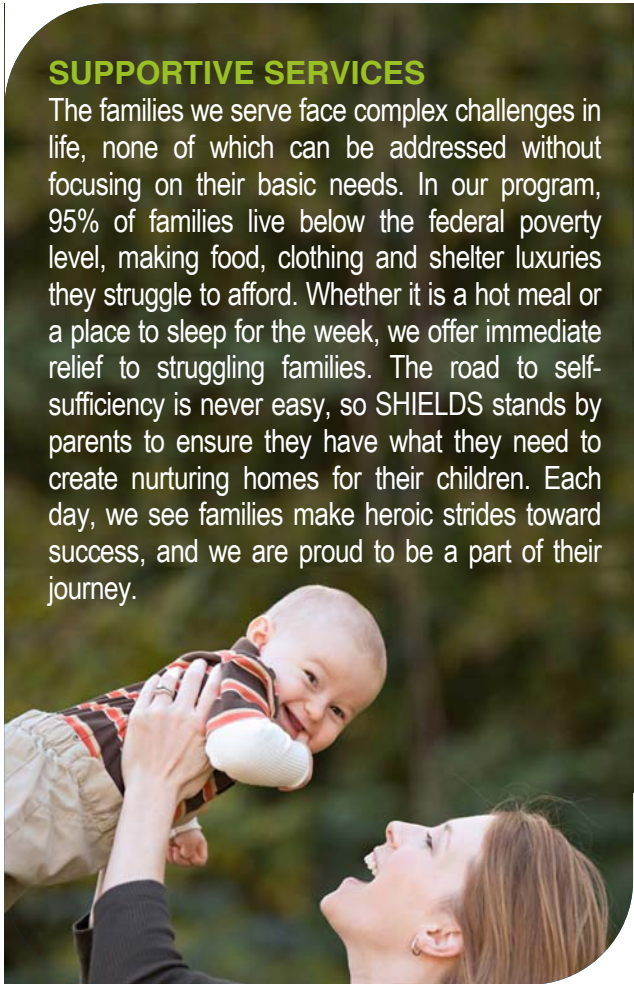
We *believe* that our families can *build* a foundation of hope, *become* productive members of the community, nurturing parents and achieve all of their dreams.

www.shieldsforfamilies.org



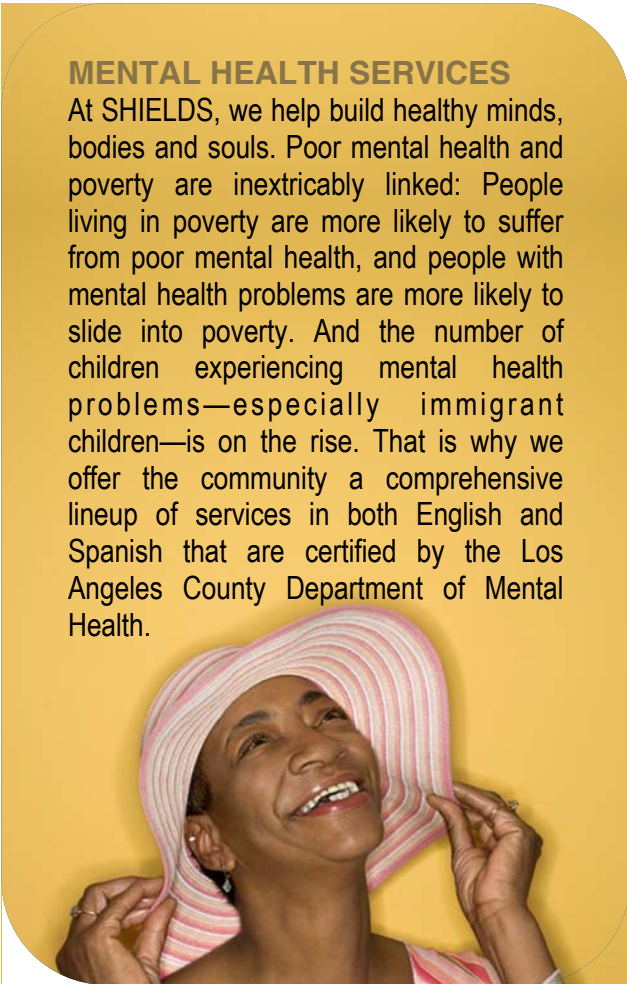
SUBSTANCE ABUSE TREATMENT

Successful, long-term recovery is the goal of our Substance-abuse Services and allows our clients to live full and productive lives. We offer nationally recognized prevention, treatment and recovery services to a variety of clients, including women and their families, women and adolescents with co-occurring disorders, monolingual Spanish-speaking clients, and Drug Court referred clients. Programs include outpatient, day treatment, and non-traditional residential services. The well-being of children and a united family are our top priorities so we are the only organization in the nation that provides treatment and program services to the entire family, including housing.



SUPPORTIVE SERVICES

The families we serve face complex challenges in life, none of which can be addressed without focusing on their basic needs. In our program, 95% of families live below the federal poverty level, making food, clothing and shelter luxuries they struggle to afford. Whether it is a hot meal or a place to sleep for the week, we offer immediate relief to struggling families. The road to self-sufficiency is never easy, so SHIELDS stands by parents to ensure they have what they need to create nurturing homes for their children. Each day, we see families make heroic strides toward success, and we are proud to be a part of their journey.



MENTAL HEALTH SERVICES

At SHIELDS, we help build healthy minds, bodies and souls. Poor mental health and poverty are inextricably linked: People living in poverty are more likely to suffer from poor mental health, and people with mental health problems are more likely to slide into poverty. And the number of children experiencing mental health problems—especially immigrant children—is on the rise. That is why we offer the community a comprehensive lineup of services in both English and Spanish that are certified by the Los Angeles County Department of Mental Health.

CHILD WELFARE

For more than 18 years, SHIELDS has helped vulnerable children and families succeed. For families affected by the child welfare system, we provide a full continuum of services—from prevention to adoption. SHIELDS is a leader in the field; our work has deeply influenced Los Angeles' child-welfare initiatives, policies and procedures. Whether it is protecting a child from harm or supporting a family struggling to stay together, our programs ensure that children grow up in safe, nurturing homes.

CHILDREN AND YOUTH

SHIELDS knows the value of investing in early childhood. The early years of life are among the most critical and most vulnerable for a child—a time when a child needs stability and family support. As a child enters school and adolescence, the challenges can often be overwhelming. We know that a successful family is a supported family, so we offer parents the education they need—and the support they deserve—to foster the success of their children. We start with children as young as 6 weeks in our child development centers and stay with them as they grow and learn in elementary, middle and high school.